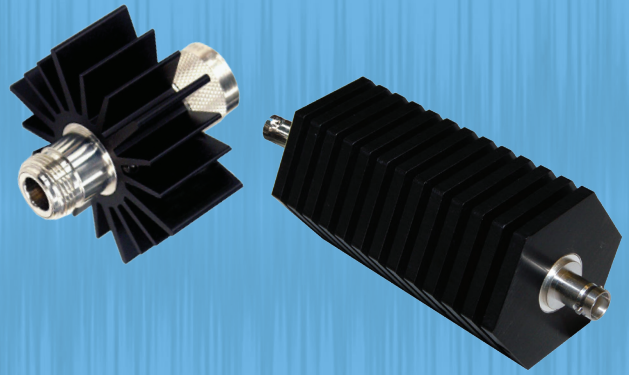




# Convection Cooled Attenuators



## The RF Experts

- Self cooling design, needs no cooling plate.
- Frequencies up to 18 GHz.
- Fully shielded against production of extraneous radiation.
- Attenuator require no AC power.
- Rugged construction.
- Broadband operation.
- Other attenuation values available upon request.
- Models to cover all LTE frequencies.

<b>Coolant Method</b>	Dry, Convection Cooled
<b>Impedance</b>	50 Ohm
<b>Operating Position</b>	Any
<b>Ambient Temperature</b>	-40°C to 40°C
<b>PIM</b>	-110 dBc Min.
<b>AC Power</b>	None*
<b>Humidity</b>	95% non-condensing
<b>Standard Attenuation Values</b>	3, 6, 10, 20, 30 dB

	Power Rating	Connector	VSWR & Frequency Range	Dimensions (LxWxH)	Weight	Finish
<b>2-A</b>	2 W	BNC, N	1.10:1 from DC to 1 GHz 1.25:1 from 1 to 4 GHz	2.4" x 0.8" Dia. 61 x 21 Dia. mm	3.1 oz. 88 g	Tri-Alloy
<b>2-A</b>	2 W	SMA	1.15:1 from DC to 2.5 GHz 1.30:1 from 2.5 to 6 GHz	1.1" x 0.4" Dia. 27 x 11 Dia. mm	1.2 oz. 34 g	Stainless Steel
<b>2-6A</b>	2 W	N	1.25:1 from DC to 6 GHz	1.8" x 0.9" Dia. 46 x 23 Dia. mm	2.5 oz. 71 g	
<b>2-18A</b>	2 W	SMA, N	1.15:1 from DC to 4 GHz 1.20:1 from 4 to 8 GHz 1.25:1 from 8 to 12.4 GHz 1.35:1 from 12.44 to 18 GHz	1.8" x 0.9" Dia. 46 x 23 Dia. mm	2.5 oz. 71 g	
<b>3-A</b>	3 W	BNC, TNC	1.10:1 from DC to 1 GHz 1.25:1 from 1 to 4 GHz	1.5" x 0.6" Dia. 39 x 16 Dia. mm	3.1 oz. 88 g	Tri-Alloy
<b>5-A</b>	5 W	BNC, N, TNC	1.10:1 from DC to 1 GHz 1.25:1 from 1 to 4 GHz	2.6" x 0.8" Dia. 67 x 21 Dia. mm	3.1 oz. 88 g	Stainless Steel
<b>5-6A</b>	5 W	N	1.25:1 from DC to 6 GHz	2.4" x 0.9" Dia. 61 x 23 Dia. mm	3.0 oz. 86 g	
<b>5-18A</b>	5 W	SMA, N	1.15:1 from DC to 4 GHz 1.25:1 from 4 to 12.4 GHz 1.35:1 from 12.4 to 18 GHz	2.5" x 0.9" Dia. 64 x 23 Dia. mm	3.5 oz. 100 g	
<b>10-A</b>	10 W	SMA, BNC, N, TNC	1.10:1 from DC to 1 GHz 1.25:1 from 1 to 4 GHz	2.8" x 2.3" Dia. 72 x 59 Dia. mm	5.0 oz. 142 g	Black Anodized Aluminum
<b>10-6A</b>	10 W	SMA, N	1.20:1 from DC to 6 GHz	2.5" x 0.9" Dia. 64 x 23 Dia. mm	3.5 oz. 100 g	Stainless Steel
<b>10-18A</b>	10 W	N	1.20:1 from DC to 4 GHz 1.30:1 from 4 to 12.4 GHz 1.45:1 from 12.4 to 18 GHz	2.5" x 0.9" Dia. 64 x 23 Dia. mm	3.5 oz. 100 g	
<b>25-A</b>	25 W	SMA, BNC, 7/16 DIN, N, TNC	1.10:1 from DC to 1 GHz 1.25:1 from 1 to 4 GHz	5.3" x 2.3" Dia. 135 x 59 Dia. mm	9.0 oz. 256 g	Black Anodized Aluminum
<b>25-6A</b>	25 W	N	1.20:1 from DC to 6 GHz	4.2" x 2.3" x 2.3" 107 x 59 x 59 mm	13.5 oz. 383 g	Stainless Steel
<b>25-18A</b>	25 W	N	1.20:1 from DC to 4 GHz 1.30:1 from 4 to 12.4 GHz 1.45:1 from 12.4 to 18 GHz	4.2" x 2.3" x 2.3" 107 x 59 x 59 mm	13.5 oz. 383 g	

# Convection Cooled Attenuators

## MODEL NOMENCLATURE

Power Rating (Watts)	Product Type A, SA, WA – Attenuator	Connector Gender M/F – Male/Female F/F – Female/ Female	Connectors** A - SMA B - BNC N - N T - TNC E - IEC 7/16	Attenuation Value in dB 03 – 3 dB 06 – 6 dB 10 – 10 dB 20 – 20 dB 30 – 30 dB
----------------------	--	---	--	---

\*\*Call for custom connector options not shown in this catalog

	Power Rating	Connector	VSWR & Frequency Range	Dimensions (LxWxH)	Weight	Finish
<b>50-A</b>	50 W	SMA, BNC, 7/16 DIN, N, TNC	1.10:1 from DC to 1 GHz 1.25:1 from 1 to 3.0 GHz	6.4" x 2.3" Dia. 163 x 59 Dia. mm	1.0 lbs. 454 g	Black Anodized Aluminum
<b>50-6A</b>	50 W	N	1.20:1 from DC to 6 GHz	4.7" x 3.0" x 3.0" 120 x 77 x 77 mm	1.7 lbs. 772 g	Stainless Steel
<b>50-18A</b>	50 W	N	1.25:1 from DC to 6 GHz 1.35:1 from 6 to 12.4 GHz 1.45:1 from 12.4 to 18 GHz	4.7" x 3.0" x 3.0" 120 x 77 x 77 mm	1.7 lbs. 772 g	
<b>75-A</b>	75 W	SMA, BNC, 7/16 DIN, N, TNC	1.10:1 from DC to 1 GHz 1.25:1 from 1 to 3.0 GHz	7.3" x 2.3" Dia. 186 x 59 Dia. mm	1.6 lbs. 726 g	Black Anodized Aluminum
<b>100-A</b>	100 W	SMA, BNC, 7/16 DIN, N, TNC	1.10:1 from DC to 1 GHz 1.25:1 from 1 to 3.0 GHz	7.3" x 2.6" x 6.4" 186 x 67 x 163 mm	3.6 lbs.	Stainless Steel
<b>100-6A</b>	100 W	N	1.20:1 from DC to 2 GHz 1.35:1 from 2 to 4 GHz 1.40:1 from 4 to 6 GHz	6.4" x 2.7" x 3.8" 163 x 69 x 97 mm	2.4 lbs. 1.7 kg	
<b>100-SA</b>	100 W	BNC, 7/16 DIN, N, TNC	1.10:1 from DC to 1 GHz 1.25:1 from 1 to 2.4 GHz	8.4" x 2.8" x 2.8" 214 x 72 x 72 mm	3.0 lbs. 1.4 kg	Black Anodized Aluminum
<b>150-A</b>	150 W	BNC, 7/16 DIN, N, TNC	1.10:1 from DC to 1 GHz 1.25:1 from 1 to 3.0 GHz	6.7" x 2.6" x 11.9" 171 x 67 x 303 mm	6.6 lbs. 3.0 kg	
<b>150-SA</b>	150 W	SMA, BNC, 7/16 DIN, N	1.10:1 from DC to 1 GHz 1.25:1 from 1 to 2.4 GHz	9.1" x 4.0" x 5.0" 232 x 102 x 127 mm	5.5 lbs. 2.5 kg	
<b>150-WA</b>	150 W	BNC, 7/16 DIN, N, TNC	1.10:1 from DC to 1 GHz 1.25:1 from 1 to 2.4 GHz	5.6" x 5.4" x 4.3" 143 x 138 x 110 mm	2.5 lbs. 1.2 kg	
<b>300-A</b>	300 W	BNC, 7/16 DIN, N, TNC	1.10:1 from DC to 1 GHz 1.25:1 from 1 to 2.4 GHz	7.3" x 5.4" x 10.9" 186 x 138 x 277 mm	12.0 lbs. 5.5 kg	
<b>300-WA</b>	300 W	BNC, 7/16 DIN, N, TNC	1.10:1 from DC to 1 GHz 1.25:1 from 1 to 2.4 GHz	9.0" x 5.4" x 4.8" 229 x 138 x 122 mm	4.6 lbs. 2.1 kg	
<b>500-WA</b>	500 W	7/16 DIN, N	1.10:1 from DC to 1 GHz 1.25:1 from 1 to 2.4 GHz	12.4" x 5.4" x 4.8" 315 x 138 x 122 mm	7.9 lbs. 3.6 kg	
<b>600-A</b>	600 W	7/16 DIN, N	1.10:1 from DC to 1 GHz 1.25:1 from 1 to 2.4 GHz	12.7" x 9.4" x 9.6" 323 x 239 x 244 mm	21.5 lbs. 9.8 kg	
<b>1000-A***</b>	1000W	7/16 DIN, N	1.10:1 from DC to 1 GHz 1.25:1 from 1 to 2.4 GHz	13.6" x 12.8" x 9.6" 346 x 326 x 244 mm	26.5 lbs. 12.0 kg	
<b>1000-WA***</b>	1000 W	7/16 DIN, N	1.10:1 from DC to 1 GHz 1.25:1 from 1 to 2.4 GHz	19.6" x 10.6" x 4.8" 498 x 270 x 122 mm	26.5 lbs. 12.0 kg	
<b>1500-WA***</b>	1500 W	7/16 DIN, N	1.10:1 from DC to 1 GHz 1.25:1 from 1 to 2.4 GHz	20.4" x 10.7" x 5.9" 519 x 272 x 150 mm	30.0 lbs. 13.6 kg	

\*\*\*Note: attenuators 1000 W and above are not available in attenuation values less than 10 dB

